

TIPS FOR Getting Here



From the West: I-64, U.S. 460 or U.S. 58; From North & South: I-85, I-95, U.S. 17 or U.S. 13. These intersect with I-64 which connects with I-264 East, leading directly to the oceanfront. For stress-free scenic routes, such as U.S. 13 over the Chesapeake Bay Bridge Tunnel, visit www.VisitVirginiaBeach.com.



Norfolk International Airport is 20 minutes from the oceanfront and is serviced by most major U.S. carriers, www.takeorf.com, (757) 857-3351.

Newport News/ Williamsburg International Airport, www.NNWairport.com, (757) 877-0221, also services the area.

James River Transportation provides ground transportation from the airport to your hotel, (757) 963-0433 or (877) 422-1105, www.jamesrivertrans.com



Amtrak service available to Virginia Beach, www.amtrak.com, (800) 872-7245.



Bus service provided by Greyhound, www.greyhound.com, (757) 422-2998, (757) 623-4660 or (800) 231-2222.



Recreational boaters can travel as far south as Miami and north to Boston via the Atlantic Intracoastal Waterway. For more information on local marinas, call (800) VA BEACH.

AVERAGE TEMPERATURES IN VIRGINIA BEACH

	Air (Highs)	Air (Lows)	Water
Jan.	48°F/09°C	34°F/01°C	47°F/08°C
Feb.	50°F/10°C	35°F/01°C	48°F/09°C
Mar.	58°F/14°C	41°F/05°C	48°F/09°C
Apr.	67°F/19°C	50°F/10°C	48°F/09°C
May	76°F/24°C	59°F/15°C	58°F/14°C
Jun.	82°F/28°C	67°F/19°C	67°F/19°C

	Air (Highs)	Air (Lows)	Water
Jul.	87°F/30°C	72°F/22°C	73°F/23°C
Aug.	85°F/29°C	72°F/22°C	76°F/24°C
Sep.	80°F/26°C	67°F/19°C	72°F/22°C
Oct.	70°F/21°C	53°F/11°C	67°F/19°C
Nov.	61°F/16°C	46°F/07°C	60°F/16°C
Dec.	52°F/11°C	37°F/02°C	53°F/12°C



MILEAGE

ATLANTA	584 miles	939 kilometers
BALTIMORE	255 miles	410 kilometers
BOSTON	575 miles	925 kilometers
CHARLOTTE	347 miles	558 kilometers
CHICAGO	897 miles	1443 kilometers
CLEVELAND	570 miles	917 kilometers
COLUMBUS	583 miles	938 kilometers
DETROIT	724 miles	1165 kilometers
LEXINGTON	598 miles	962 kilometers
LOUISVILLE	668 miles	1075 kilometers
MIAMI.....	975 miles	1569 kilometers
NEW YORK CITY.....	362 miles	582 kilometers
ORLANDO.....	771 miles	1240 kilometers
PHILADELPHIA	277 miles	445 kilometers
PITTSBURGH	444 miles	714 kilometers
RALEIGH.....	202 miles	323 kilometers
RICHMOND	107 miles	172 kilometers
WASHINGTON, DC.....	209 miles	336 kilometers
MONTREAL	722 miles	1161 kilometers
QUEBEC CITY.....	869 miles	1398 kilometers
TORONTO	680 miles	1094 kilometers

Recreation, Sports & Wellness

- 1 First Landing State Park / Chesapeake Bay Center
- 2 Back Bay National Wildlife Refuge / False Cape State Park
- 3 Oceanfront & Bay Cruises / Offshore Sport Fishing
- 4 Pier Fishing - multiple locations
- 5 Virginia Aquarium Boat Trips

Culture & Heritage

- 6 Thoroughgood House
- 7 Edgar Cayce's A.R.E.
- 8 Atlantic Wildfowl Heritage Museum
- 9 Historic Cape Henry Lighthouse / First Landing Cross / Battle of the Capes Monument
- 10 Lynnhaven House
- 11 Francis Land House
- 12 Virginia Legends Walk
- 13 Naval Aviation Monument Park / Norwegian Lady Statue
- 14 Virginia Museum of Contemporary Art
- 15 Bill Myers Veterans Memorial
- 16 King Neptune
- 17 Old Coast Guard Station
- 18 Military Aviation Museum
- 19 Vibe District
- 20 Ferry Plantation House
- 21 Union Kempsville Museum
- 22 Ebenezer Baptist Church (historical)
- 23 Morning Star Baptist Church (historical)

Things to Do

- 24 Oceana Jet Observtion Park
- 25 Mt. Trashmore Park and Skate Park
- 26 Ocean Breeze Water Park
- 27 Playgrounds on the Beach
- 28 Virginia Beach Motorworld Family Thrill Park
- 29 Atlantic Fun Park
- 30 Virginia Aquarium & Marine Science Center + Adventure Park
- 31 Beach Street USA (17th to 25th Street)
- 32 Oceanfront Stages - multiple locations
- 33 Virginia Beach Sportsplex / Field House
- 34 Veterans United Home Loans Amphitheater
- 35 Christian Broadcast Network / Regent University Theater
- 36 Hampton Roads Soccer Complex
- 37 Sandler Center for the Performing Arts
- 38 Lynnhaven Mall
- 39 Pembroke Mall / Town Center
- 40 Resort Area / Hilltop
- 41 Virginia Beach Farmers Market
- 42 Landstown Commons
- 43 Red Mill Commons
- 44 iFly
- 45 TopGolf
- 46 Hillier Ignite Fitness Park



HOP ON A SHUTTLE From the North End of the boardwalk to South Rudee Inlet and everywhere in between, "The VB Wave" Shuttle is the convenient way to get around. The Wave's Atlantic Avenue route operates from May through the last weekend in September, while the Aquarium & Campground Shuttle and Lynnhaven Mall Shuttle routes are available through Labor Day. For more information about HRT services, call (757) 222-6100 or visit www.gohrt.com.

VIRGINIA BEACH REGIONAL MAP

Chesapeake Bay



See more on page 71



See more on page 70



See more on page 71







Atlantic Ocean



RESORT BEACH

ROUTES TO ATLANTIC AVENUE

There's more than one way to get to Atlantic Avenue and the oceanfront. To avoid traffic congestion, we suggest the Birdneck Road, 22E, exit off Interstate 264. Convenient street signs are displayed at the bottom of the exit ramp and will direct you to your desired Atlantic Avenue destination.

-  Laskin Rd. (31st St.)
-  I-264 East (21st St.)
-  Virginia Beach Blvd. (17th St.)
-  Norfolk Ave. (9th St.)

TROLLEY TICKETS

VB Wave Tickets are available at the following SunSations locations on Atlantic Avenue: 5th, 8th, 11th, 19th, 23rd, 25th, 27th, 30th & 33rd Streets.

To Virginia Aquarium and Marine Science Center and Sandbridge Beach

To First Landing State Park, Cape Henry and Chesapeake Bay Beach.

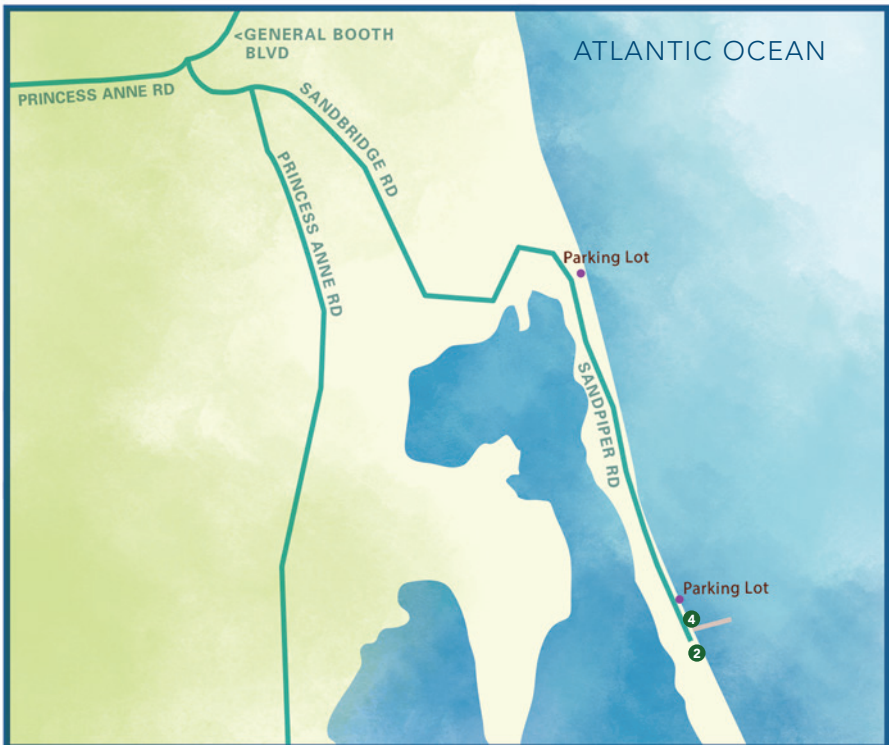
To Sandbridge Beach

CHESAPEAKE BAY BEACH



GETTING THERE: From the Resort Area, head north on Pacific Avenue which merges with Atlantic Avenue (Route 60). Bear left on Shore Drive (Route 60). Continue west, through First Landing State Park to the Bay Area.

SANDBRIDGE BEACH



GETTING THERE: From the Resort Area, head south on Pacific Avenue to General Booth Boulevard, then left onto Princess Anne Road. Continue straight onto Sandbridge Road.